

ECHO Institute,  
University of New  
Mexico Health  
Sciences Center

# Project ECHO for Southwest College & Career Counseling



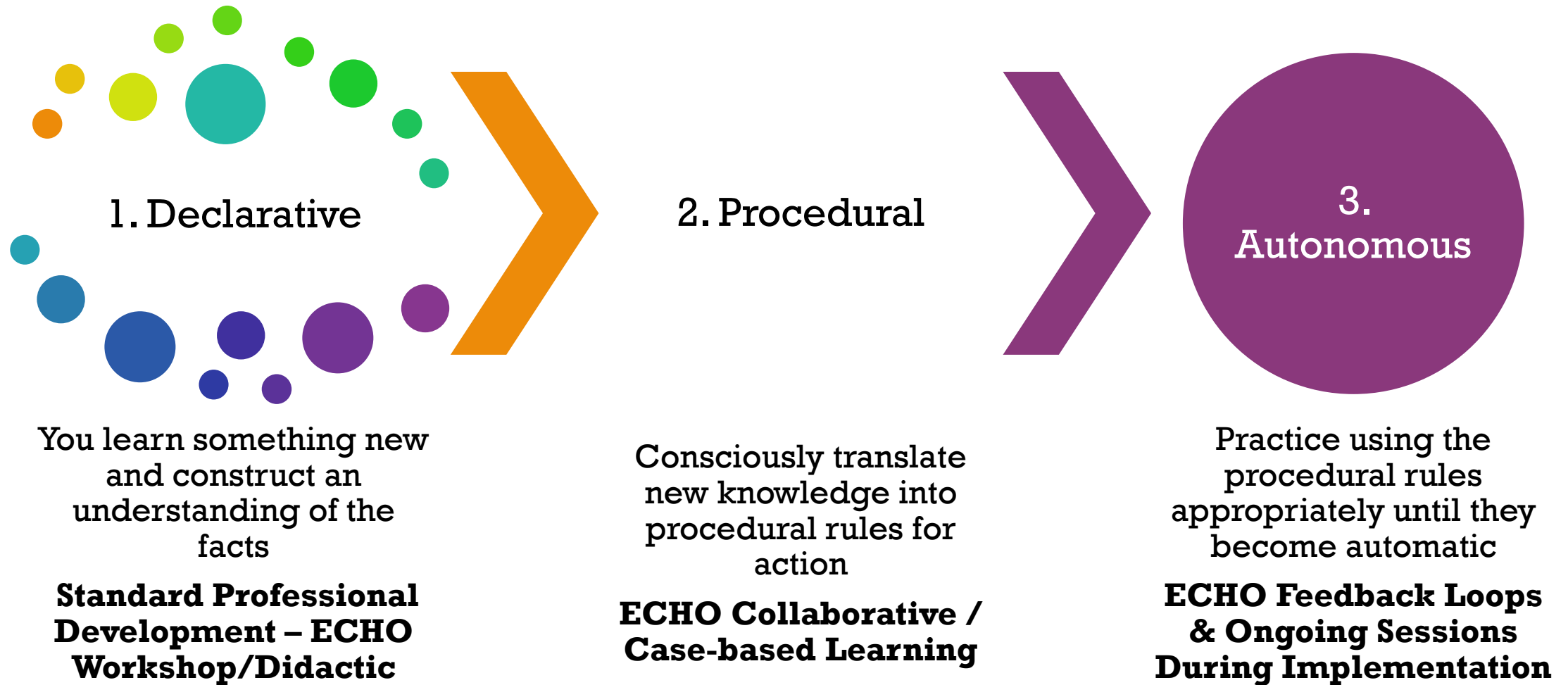
**PUBLIC EDUCATION IS THE ENGINE OF JUSTICE.**  
**IT HAS THE POWER TO REDUCE POVERTY,**  
**IMPROVE HEALTH, SOLVE CLIMATE CHANGE, STRENGTHEN**  
**ECONOMIES AND COMBAT RACIAL INEQUITIES**





# ECHO: Translating Research to Practice

The three stages of expert knowledge acquisition



# The ECHO Model

**Amplification** - Use *Technology* to leverage scarce resources

A



B



Share **Best Practices** to reduce disparity

C



**Case Based Learning** to master complexity

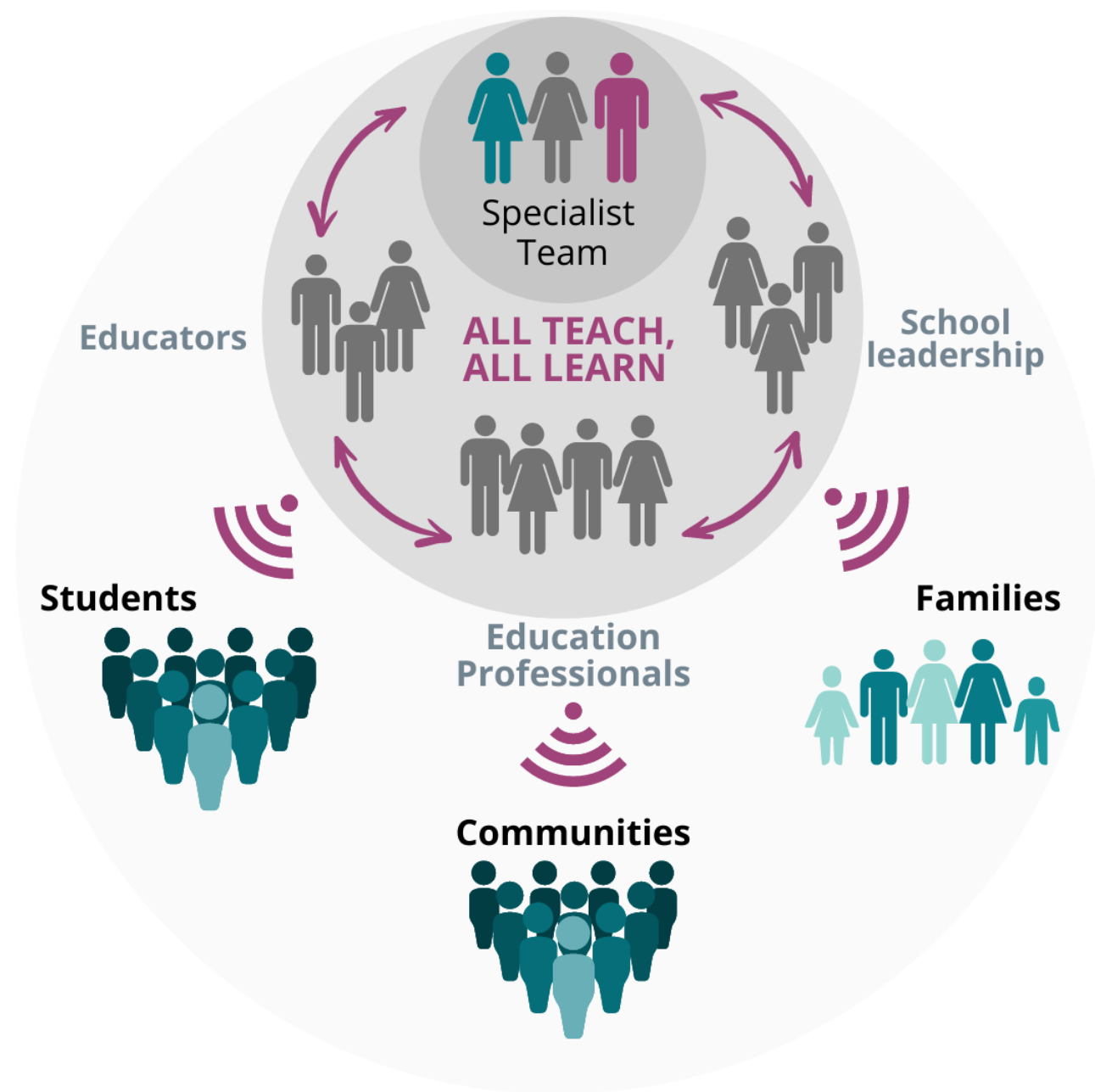
D



Web-based **Database** to *Monitor Outcomes*

# Why the ECHO Model has been successful?

- Build a community of practice
- Learning Loop
- All teach, All Learn
- Force multiplication



# ECHO FOR SOUTHWEST COLLEGE AND CAREER COUNSELING (SWCCC)



ECMC



OKLAHOMA  
Education



Virtual professional development opportunity for educators and counselors in Southwest rural and underserved communities involved in **college and career pathway planning for students**

- ✓ Open to *all professionals who are engaged in college and career planning and serve **Native American students***
- ✓ Participants will gain **access to experts, resources, training, and best practices** in college and career counseling to make them more confident and equipped to serve their students
- ✓ There are **no costs** associated with program involvement and participants **will receive a stipend** upon successful completion of program



1st & 3rd Wednesday



3:30-4:30pm (MST), 4:30-3:30pm (CST)



SWCCCecho@salud.un.edu





# Our Hub Team of Subject Matter Experts

Mentorship from college and career counseling experts



**Marissa Lightsey**, Director of College and Career Readiness at Oklahoma State Department of Education



**Dacia Yazzie (Diné, Tesuque Pueblo, Salt River Pima)**, Native American Youth Advisor & Johnson O'Malley Program at Farmington High School (New Mexico)



**Theresa Kennedy**, School Counselor at Capitan High School (New Mexico)

# So Far...

**Sessions designed specifically for educators serving a significant population of Native American students**

- **36 Unique Participants**
- **29 Schools/Native American Organizations**
- **21 New Mexico Educators**
- **14 Oklahoma Educators**

**Launched sessions focused on promoting learning and use of evidence-based approaches to support college & career pathways**

- **Making Connections with Native American Students**
- **How Homes and Schools influence Career Pathways for Indigenous Students**
- **Reflecting on Our Current Strategies for Connecting with Native Students, Their Families, Their Community, and Elders**

**Collaborative discussions on dilemmas of practices through 2 case presentations with recommendations from peers and experts**

- **Low participation rates in in-person classes and scholarship sessions**
- **Implementation of a career program for PK-8th grade students that will carry them forward to their high school course selections**



# Key Takeaways

*The biggest takeaways from today's session was the collaboration among educators and community leaders who are assisting our Native Youth*

*I am excited to learn about the programs for minority students. I came from a school with a higher population of Native Americans and look forward to assisting the students in my current school that may have been overlooked*

*It is imperative to approach college and post-secondary plans by connecting with the student and their family. This approach can help guide the student to the right college or career fit*

*This felt like I did more than just listen. I was engaged. Loved the breakout room and smaller session*



- **Our future outreach efforts will focus on encouraging current participants to invite their colleagues to join as thought partners**
- **Our digital Resource Library has been effective for those who aren't able to attend every sessions**