



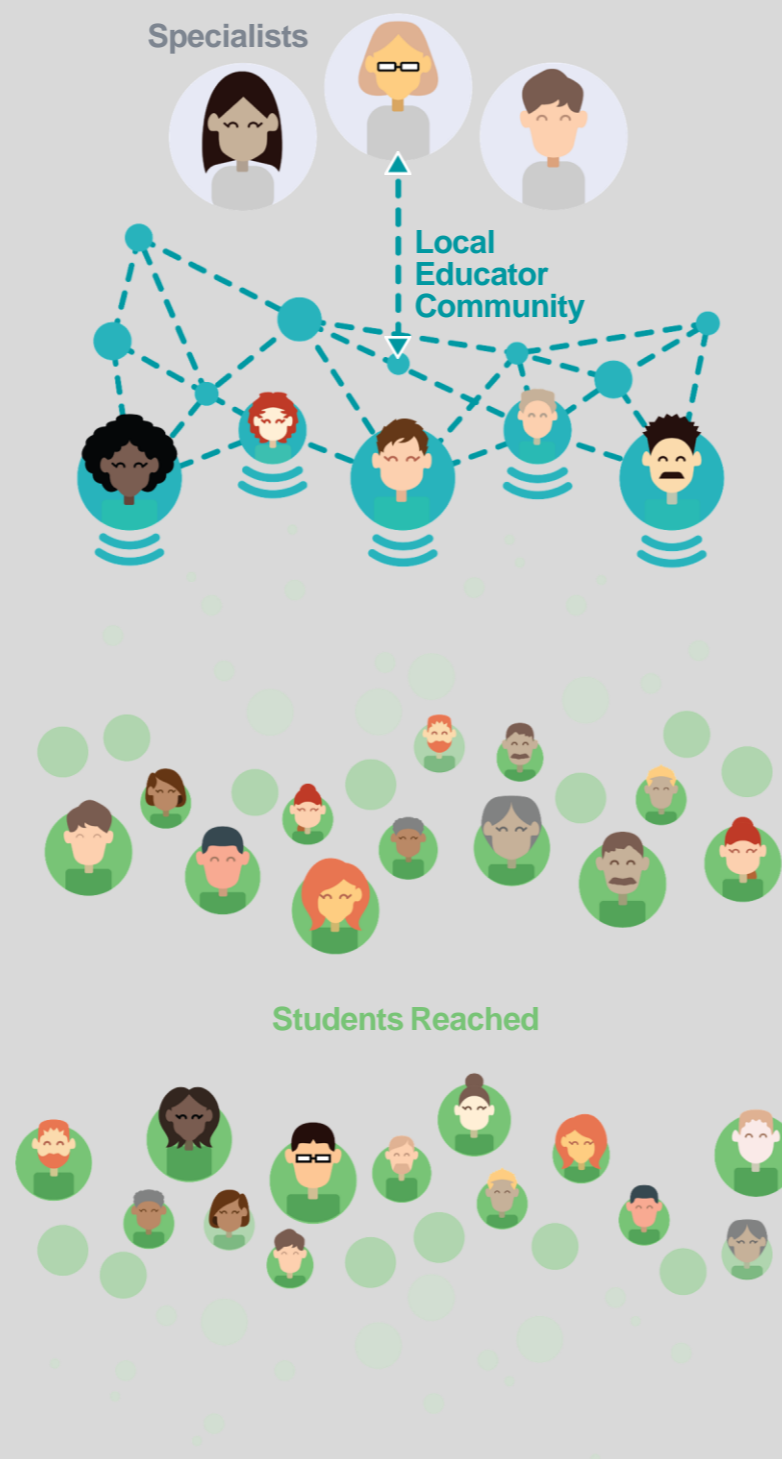
**New Mexico**  
**ECHO for Education:**  
**The Early Warning System Network**  
**EWS ECHO**

Presented by Felicia Walker  
[fwalker@tdschools.org](mailto:fwalker@tdschools.org)

Providing the opportunity for educators in remote and isolated areas to:

- Share best practices,
- Receive ongoing and timely professional development,
- Implement collaborative problem-solving methods to help solve complex issues and questions regarding New Mexico's school systems and its learners.

## ECHO Model™



Providing the opportunity for educators in remote and isolated areas to share best practices, receive ongoing and timely professional development, and implement collaborative problem solving methods to help solve complex issues and questions regarding New Mexico's school systems and its learners.



Use Technology to leverage scarce resources



Share "best practices" to reduce disparities



Apply case-based learning to master complexity



Evaluate and monitor outcomes

**Use Technology to leverage scarce resources**

**Share "best practices" to reduce disparities**

**Apply case-based learning to master complexity**

**Evaluate and monitor outcomes**



Through technology-enabled collaborative learning, EWS ECHO builds capacity and creates access to high-quality professional learning throughout New Mexico.

### Educators

- Acquire new expertise & resources
- Access to mentoring & subject matter experts
- Building a community of practice

#### Moving knowledge, not students and educators

Through technology-enabled collaborative learning, EWS ECHO builds capacity and creates access to high-quality professional learning throughout New Mexico.



#### Hub and spoke knowledge-sharing networks create a learning loop:

- Educators learn from experts.
- Educators learn from each other.
- Experts learn from educators as best practices emerge.

### Doing More for Students and Educators Across New Mexico



Educators

- Acquire new expertise & resources
- Access to mentoring & subject matter experts
- Building a community of practice



Community

- Build & retain good educators
- Skilled & engaged workforce
- Create more effective programs



Students

- More opportunities for learning
- Guidance and access to resources
- Tools to overcome barriers



State Systems

- Increase graduation rates
- Reduce remediation rates
- Develop our economy through a knowledgeable, prepared workforce

### Community

- Build & retain good educators
- Skilled & engaged workforce
- Create more effective programs

### Students

- More opportunities for learning
- Guidance and access to resources
- Tools to overcome barriers

### State Systems

- Increase graduation rates
- Reduce remediation rates
- Develop our economy through a knowledgeable, prepared workforce

### Transforming Education in New Mexico



#### Creates Virtual Learning Communities

Educators in the most remote and isolated schools can regularly receive and share effective practices and present their most complex challenges where all teach and all learn.

For More Information about New Mexico EWS ECHO contact: [fwalker@tdschools.org](mailto:fwalker@tdschools.org)

For More Information about New Mexico EWS ECHO contact: [fwalker@tdschools.org](mailto:fwalker@tdschools.org)



## Details:

- Kicking off in November 17<sup>th</sup> or 24<sup>th</sup>
- Tuesdays at 4pm MST (60 min sessions)
- Participants that complete expectations receive a stipend
- Opportunity to share a challenge/case study
- Receive “real-time” suggestions/interventions/ideas to try immediately
- All sessions are recorded and may be shared with all staff

Felicia Walker

[fwalker@tdschools.org](mailto:fwalker@tdschools.org)



**QUESTIONS?**

**COMMENTS!**

Felicia Walker

[fwalker@tdschools.org](mailto:fwalker@tdschools.org)