



# 2021 School Counselors' Virtual Conference

## IN-DEMAND & STAR OCCUPATIONS

**RACHEL MOSKOWITZ**

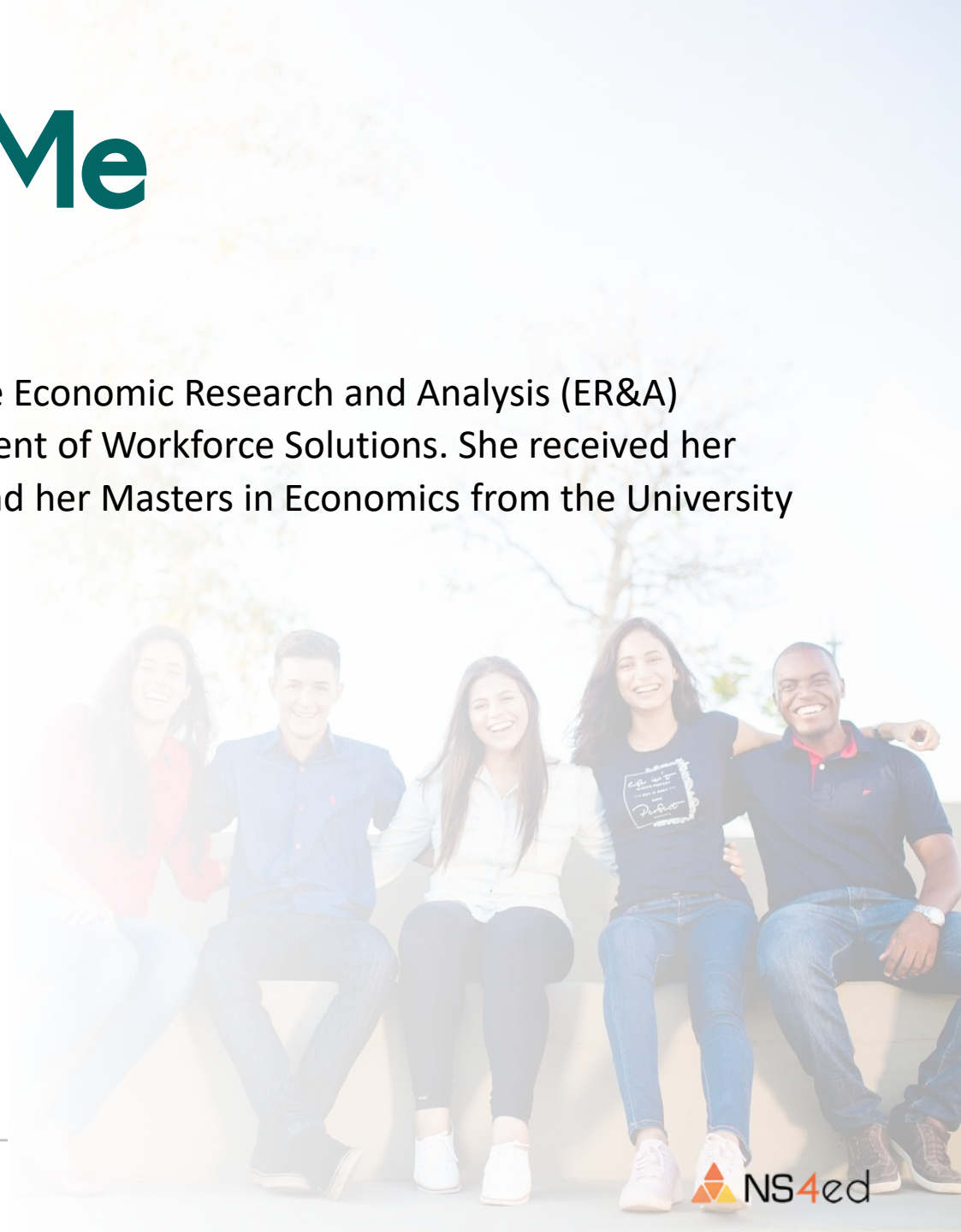
Session Time: 9:00 a.m.



# About Me



**Rachel Moskowitz** is the Chief of the Economic Research and Analysis (ER&A) Bureau at the New Mexico Department of Workforce Solutions. She received her BSBA at The Ohio State University and her Masters in Economics from the University of New Mexico.



# Labor Market Information (LMI): What is it?

## For job seekers and students

LMI is used to make informed career and employment decisions.

## For policy makers and public entities

LMI is used to make sound policies that promote economic development and job creation. It is also used to allocate financial resources.

## For researchers

LMI is used to assess the health of the economy and forecast future economic trends.

## For employers

LMI is used to help make informed business decisions in response to labor market demands and economic conditions.



Wages



Employment Projections



IN-DEMAND & STAR OCCUPATIONS



- Most recent: 2019
- Updated once a year
- Data available by state, MSA, and workforce region
- Data source: Occupational Employment Statistics (OES), a survey of New Mexico businesses

- Most recent: 2018 - 2028
- Updated once every other year
- Data available by state, MSA, and workforce region
- Data sources: OES, Quarterly Census of Employment & Wages (QCEW), Current Employment Statistics (CES), BEA, Census

160+ occupations with more job openings, faster job growth, and/or higher wages than the average

**An In-Demand occupation is any occupation that meets both of these two criteria:**

**1 | MORE JOB OPENINGS**  
Projected annual openings are greater than the openings of at least 75 percent of all occupations (i.e., in the top 25<sup>th</sup> percentile for openings) for the area.

**2 | FASTER JOB GROWTH**  
The projected percentage growth of employment in the occupation is higher than the average percentage growth for all occupations in the area.



**Methodology is here:**

[https://www.dws.state.nm.us/Portals/0/DM/LMI/2020\\_InDemand\\_Star\\_Method.pdf](https://www.dws.state.nm.us/Portals/0/DM/LMI/2020_InDemand_Star_Method.pdf)



Find a Job

Earn While You Learn

Researchers

**Data**

- Employment Snapshot
- Labor Force & Unemployment
- Employment & Industry
- Occupations & Wages
- Employment Projections
- Occupational Outlook**
- US Consumer Price Index
- Other Data Resources

**Resources**

- Request to be Added to LMI Publication Email Notifications
- LASER
- Career Solutions
- Why I Work

**Publications**

- Economic News
- Labor Market Review
- Reports & Special Analysis
- Career & Employment Resources
- Veteran-Specific Resources
- Understanding LMI
- 2021 Publication Schedule

**What is Labor Market Information**

What is Labor Market Information (LMI)?



Find a Job

Earn While You Learn

Researchers

Data

- Employment Snapshot
- Labor Force & Unemployment
- Employment & Industry
- Occupations & Wages**
- Employment Projections**
- Occupational Outlook
- US Consumer Price Index
- Other Data Resources

Resources

- Request to be Added to LMI
- Publication Email
- Notifications
- LASER
- Career Solutions**
- Why I Work**

Publications

- Economic News
- Labor Market Review
- Reports & Special Analysis
- Career & Employment Resources**
- Veteran-Specific Resources
- Understanding LMI
- 2021 Publication Schedule

What is Labor Market Information

What is Labor Market Information (LMI)?

# Your Online Resources for LMI

[www.dws.state.nm.us/LMI](http://www.dws.state.nm.us/LMI)

## **NM's LMI Website.**

Interactive and easy-to-use, this site is for those that need answers quickly. It features online data visualizations such as charts and graphs can be customized.

[www.jobs.state.nm.us/analyzer](http://www.jobs.state.nm.us/analyzer)

## **LASER.**

Good for experienced users such as economic developers and researchers that want to get the data and format it themselves.



[www.NMCareerSolutions.com](http://www.NMCareerSolutions.com)

## **Career Solutions.**

Interactive career exploration website that incorporates LMI so students and job seekers can make informed decisions.

<https://whyiwork.dws.state.nm.us>

## **Why I Work.**

A budgeting tool that shows how much money a person needs to make to afford the things he or she wants and needs.





[www.dws.state.nm.us/LMI](http://www.dws.state.nm.us/LMI)



401 Broadway NE  
Albuquerque 87102



(505) 280-8831



[Rachel.Moskowitz@state.nm.us](mailto:Rachel.Moskowitz@state.nm.us)

**Thank You!**  
Feel free to contact me.