



# Why Career Exploration works?

# Understanding the Problem



**Economix**  
Explaining the Science of Everyday Life

## Only Half of First-Time College Students Graduate in Four Years

By CATHERINE RAMPPELL FEBRUARY 26, 2013 6:40 PM 89 Comments

As we've covered here [many times before](#), there is an abundance of evidence showing that going to college

CATHERINE RAMPPELL  
Dollars to doughnuts

Businessweek

## Next Big Threat to the U.S. Economy?

of Texas as a parole officer, teaches part-time, and is living with her parents. She held off marrying her boyfriend of four years.

## Student loan debt widens US wealth gap

Mar. 27, 2014 0 comments Print Reprints Share Like 0

OS (3) COMMENTS

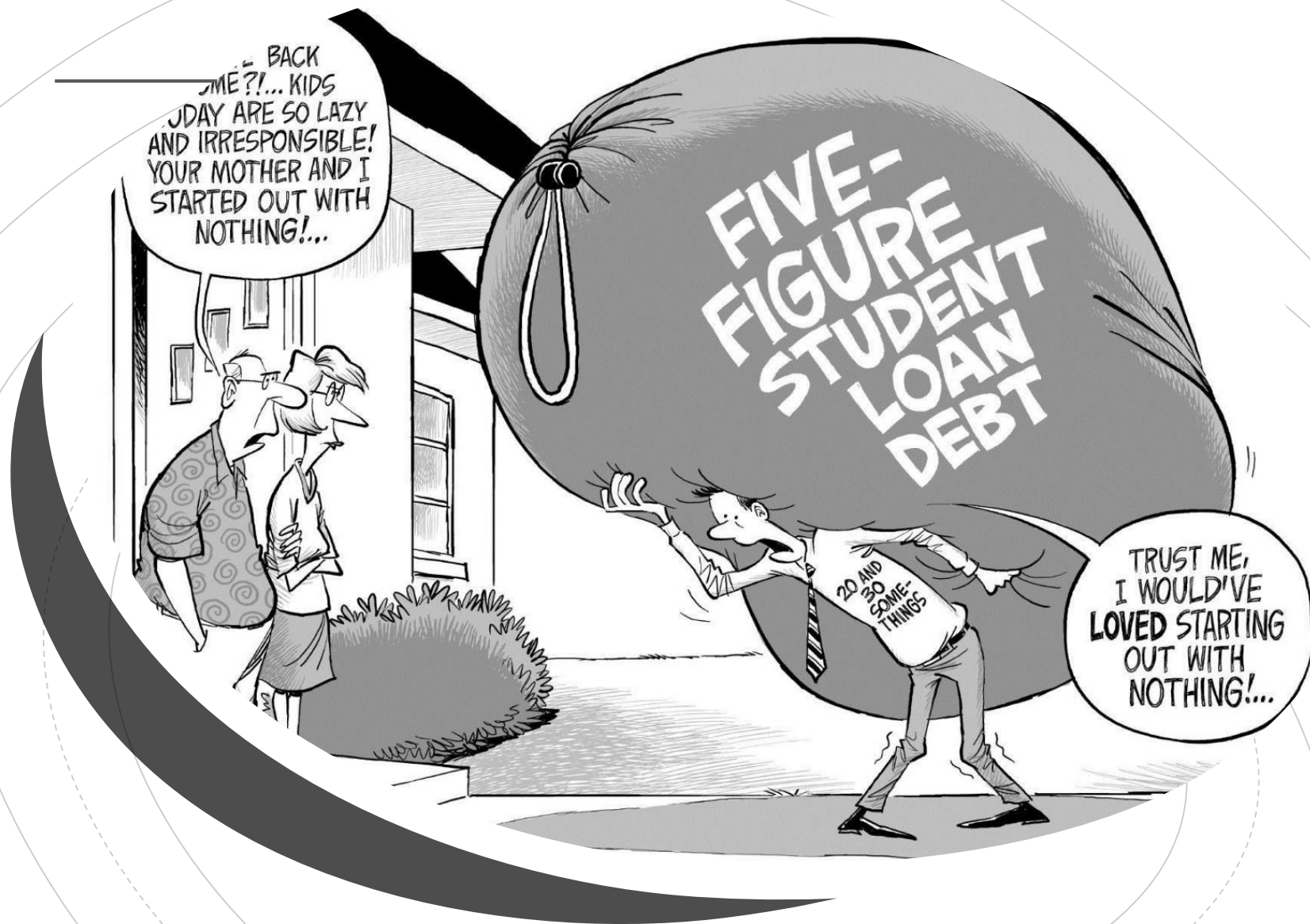
MPSON

Gregory Zbylut pays \$1,300 toward his law school tuition each month of not qualifying for a decent mortgage.

toward their student loans \$900 Dr. Nida Degeays



What happens  
when we have  
bad career  
Alignment



Debt?



By 2025, **78 percent** of jobs will require postsecondary education and training beyond high school.

Source: <https://cew.georgetown.edu/states-initiative/> (accessed August 24, 2016)



# Preparing Students for Careers

## Value of Degrees/Certificates is Changing

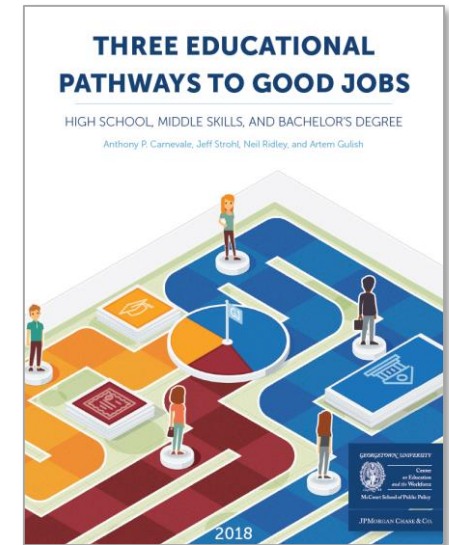
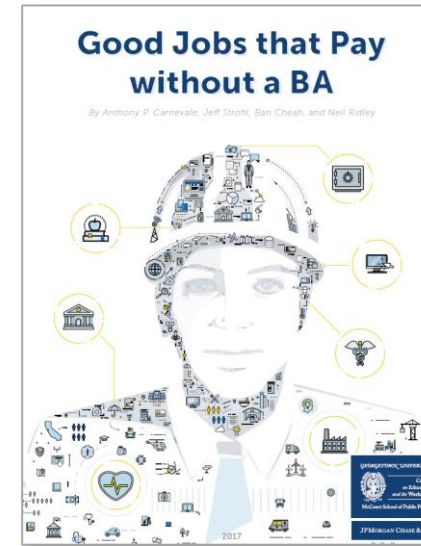
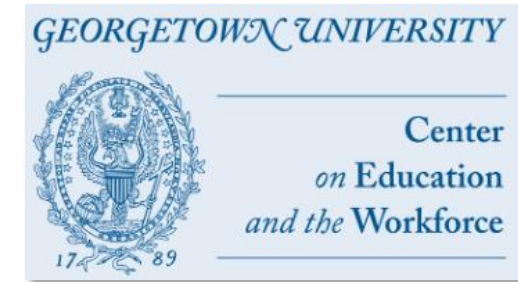
- Schools have traditionally urged students to earn a bachelor's degree due to higher lifetime earnings.
- Economic changes and the increasing cost of college is making the picture more complex.

### General Degree Trends

↓ **High School** – Low-skill jobs that paid earlier generations are decreasing.

↑ **Associate's Degrees/Certificates** – Opportunities in middle-skill professions are increasing.

↑ **Bachelor's Degrees** – Good jobs requiring advanced degrees are increasing.

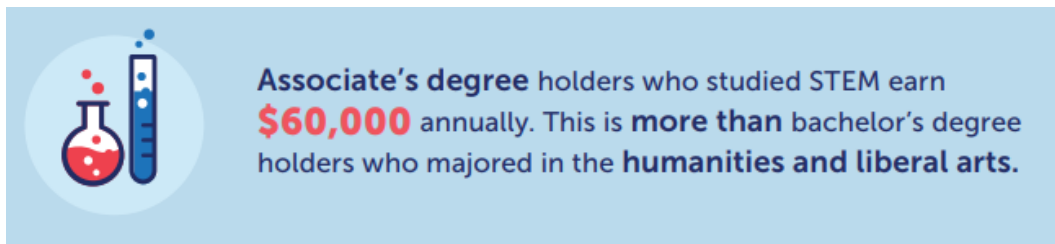


Associate's Degrees/Certificates are becoming a more viable option.

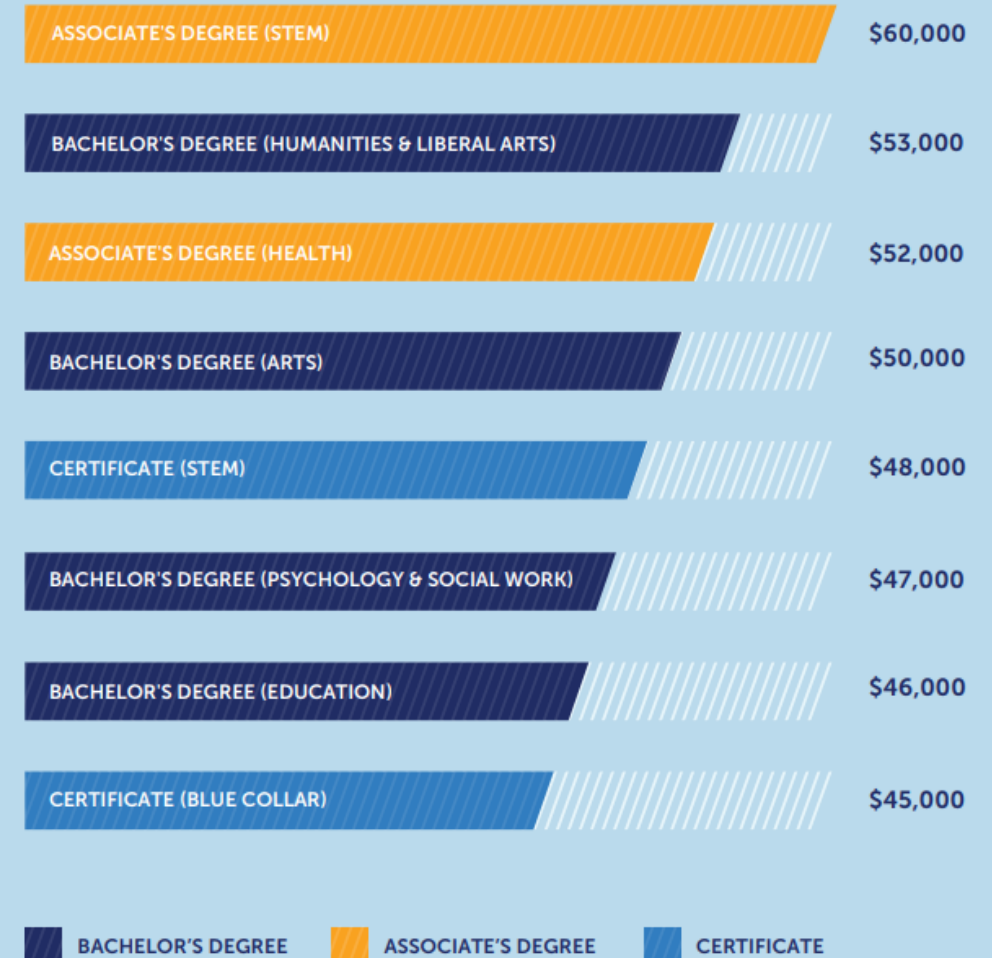
# Preparing Students for Careers

In some cases, individuals with an associate's degree or certificate can out-earn those with a bachelor's degree.

**Bottom Line** – Preparing for a viable occupation can be more important than focusing on attaining a specific type of degree.



## MEDIAN EARNINGS COMPARISON BY EDUCATION LEVEL & FIELD OF STUDY



Source: Georgetown University Center on Education and the Workforce analysis of data from the US Census Bureau's American Community Survey (2009-2016 pooled one-year person level microdata files) and Survey of Income and Program Participation (2004/2008 combined panels)

# Disconnect between Education to the Realities of Employment



## Education

The official four-year graduation rate for students attending public colleges and universities is 33.3%. The six-year rate is 57.6%.



## Employment

43% of college graduates are underemployed in their first job. Of those, roughly two-thirds remain in jobs that don't require college degrees five years later.



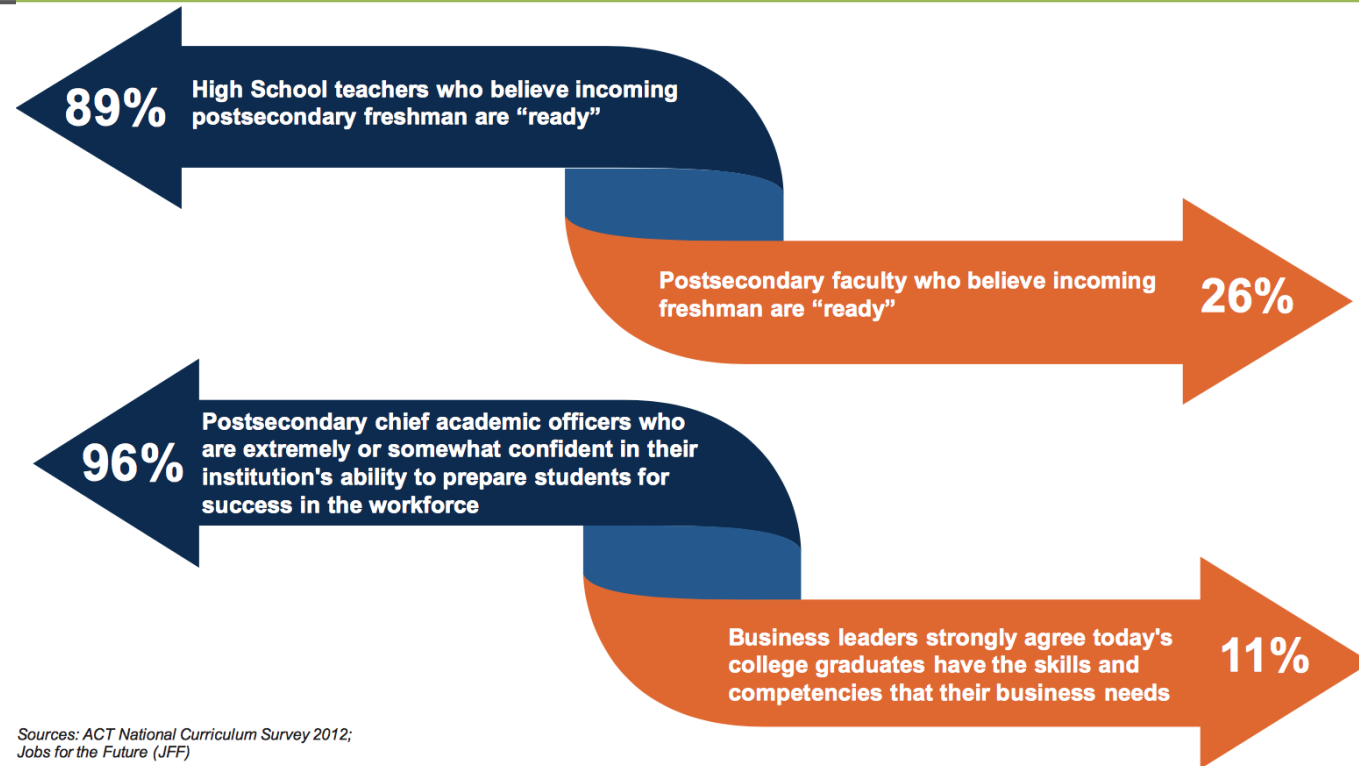
## Economic Development

Employers are hiring, but 80% say they can't find skilled candidates



## MISMATCHES IN “READINESS”

Mismatch in  
education  
and  
business...



Sources: ACT National Curriculum Survey 2012;  
Jobs for the Future (JFF)

# Who does it hurt the most



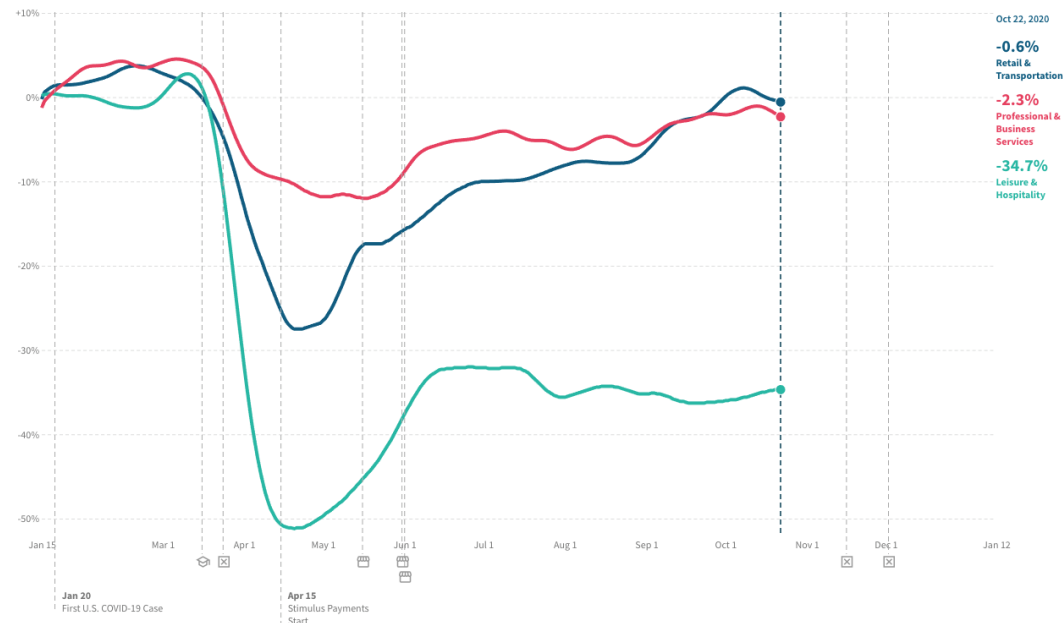
Less than **10 percent** of children born in the bottom quartile of household incomes attain a bachelor's degree by age 25, compared to more than 50 percent in the top quartile.

Source: <http://www.ed.gov/news/press-releases/fact-sheet-expanding-college-access-through-dual-enrollment-pell-experiment> (accessed August 16, 2016)

# Impact of Covid on Low Wage Employment

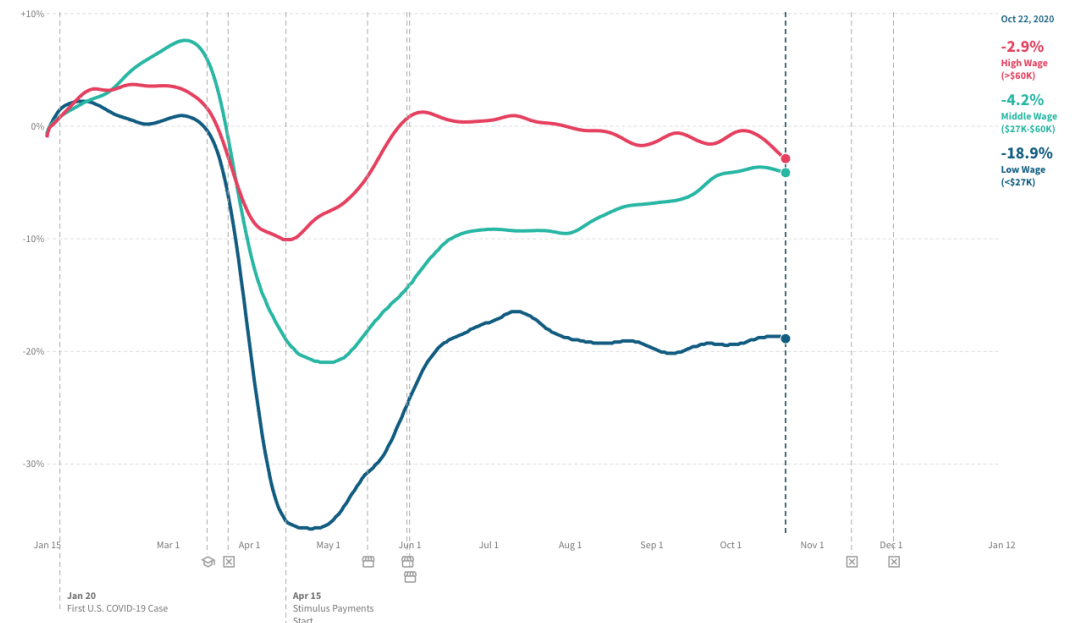
In **New Mexico**, as of October 22, 2020, employment rates in retail and transportation decreased by **0.6%** compared to January 2020 (not seasonally adjusted).

DOWNLOAD CHART



In **New Mexico**, as of October 22, 2020, employment rates among workers in the bottom wage quartile decreased by **18.9%** compared to January 2020 (not seasonally adjusted).

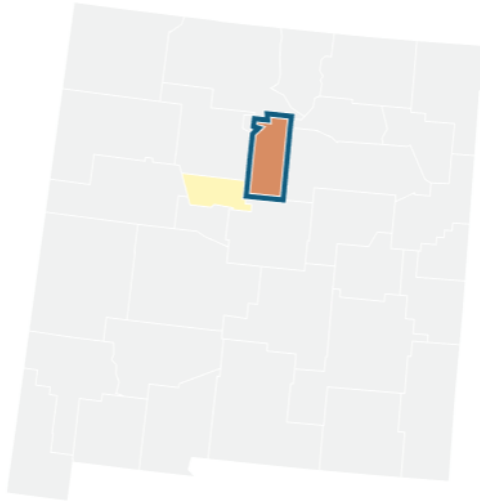
DOWNLOAD CHART



# Sante Fe – Low Wage

## Percent Change in Employment ⓘ

New Mexico ▾ Middle Wage (\$27K-\$60K)



### Total

☐ Total

### Income

☒ Low (<\$27K)

☒ Middle (\$27K-\$60K)

☒ High (>\$60K)

### Industry

☐ Professional & Business Services

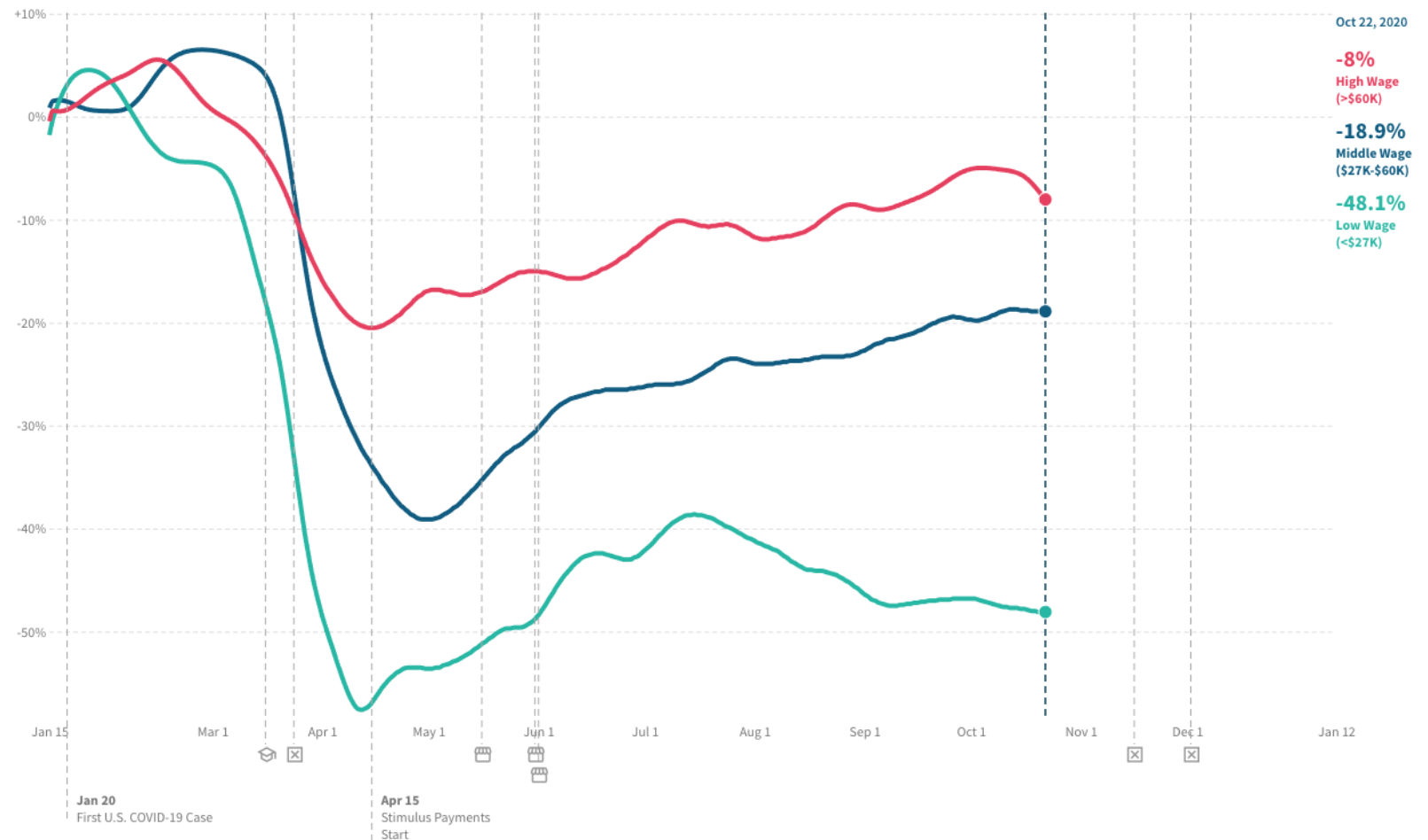
☐ Education & Health Services

☐ Retail & Transportation

☐ Leisure & Hospitality

In **Santa Fe**, as of October 22, 2020, employment rates among workers in the middle wage quartiles decreased by **18.9%** compared to January 2020 (not seasonally adjusted).

DOWNLOAD CHART

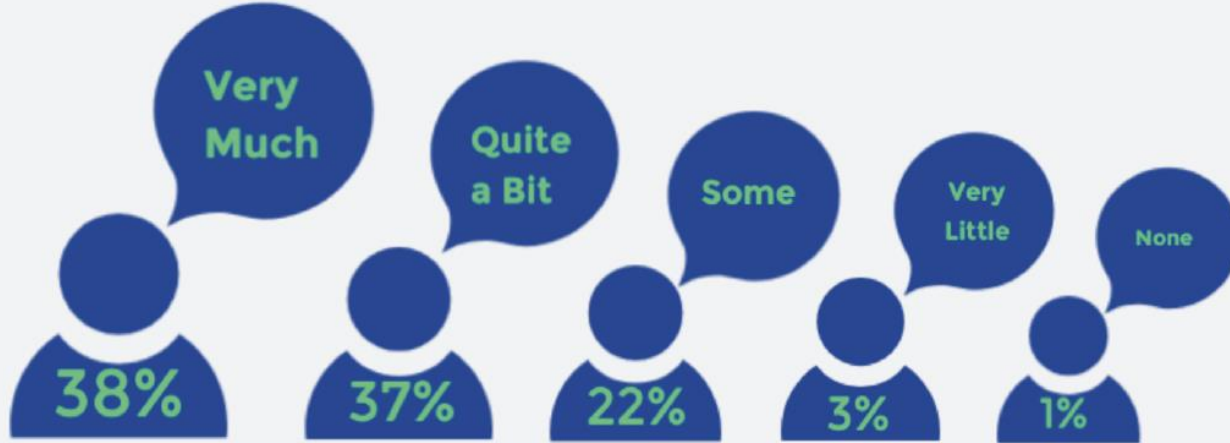




# Career Exploration

# Students Think about Careers

## Future Careers Are on Students' Minds...



High School Students think  
**Very Much**  
about future careers as  
early as freshman year



**47%** Seniors

**38%** Juniors

**34%** Sophomores

**32%** Freshmen

# Most CTE Students go and complete a PS degree/certificate

## CTE Students Defy Stereotypes

### Post Secondary Education Aspirations

<b>61%</b>	State College
<b>24%</b>	Community College
<b>21%</b>	Uncertain
<b>16%</b>	Technical College
<b>14%</b>	Private College

### Student GPAs

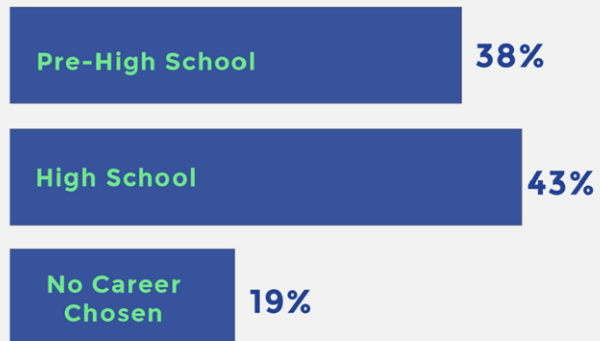
"A"	<b>41%</b>
"B"	<b>37%</b>
"C"	<b>18%</b>

### PLANS FOR YEAR AFTER GRADUATION

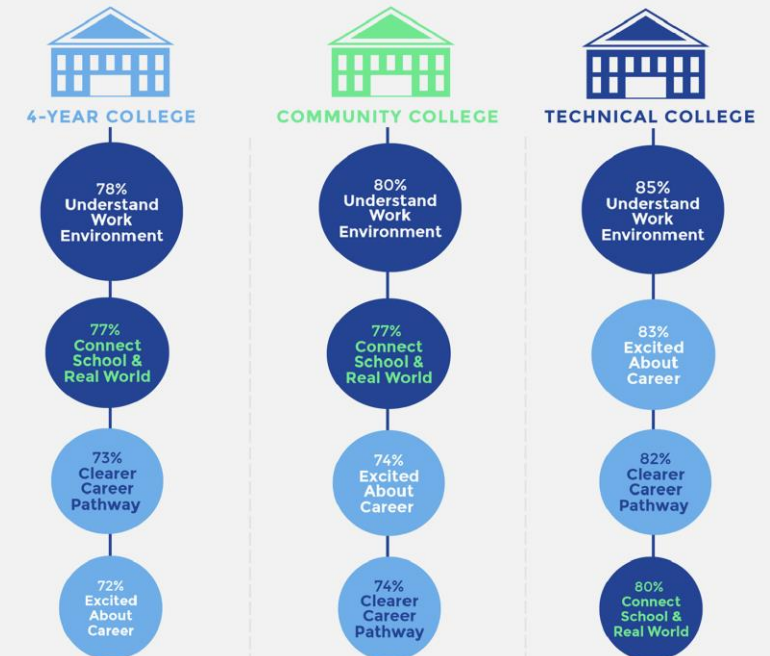


# Understand the Benefits of CTE

## When CTE Students Chose Career Path



## CTE BENEFITS REGARDLESS OF EDUCATIONAL PATHWAY





## REVIEW OF CAREER PATHWAYS-NM



# Preparing Students for Careers



# Labor Market Information

---

Simple statistics can reveal jobs with the most openings, greatest growth, and highest wages.



Annual Openings



Median Wages



Projected New Jobs



Growth Rates



V2 IS OUT NOW!

# Education with Destination

## Welcome to New Mexico

[Get Started](#)

## Explore Your Area

[Get Started](#)



# Career Solutions

## Getting Started

The process of identifying careers you're interested in is called career exploration. Take the time now to evaluate who you are and what you want so you can get started on the right path.

CAREER EXPLORATION

